

**Selected Demographic Characteristics of  
Schuylkill County**

Prepared by the Pennsylvania State Data Center

July 5, 2007

## **Population**

As of July 1, 2006, the population of Schuylkill County was 147,405, the 22<sup>nd</sup> largest county in Pennsylvania. Since 2000, the county's population has declined by 2,929, or 1.9 percent, compared to 1.3 percent growth for the Commonwealth as a whole. Municipal population estimates, up to 2005, show that just 23 of the county's minor civil divisions experienced positive growth between 2000 and 2005. Tremont Township (+30.4 percent) experienced the fastest growth by far during that period, followed by Mahanoy Township (+10.8 percent). Mahanoy (+333), West Penn (+238), Wayne (+152), and South Manheim (+128) townships each gained more than 100 residents. Tamaqua and McAdoo boroughs topped Schuylkill County municipalities in percent population decline during this period, while Pottsville City (-785), Tamaqua Borough (-420), and Shenandoah Borough (-328) led the 16 minor civil divisions that have lost more than 100 residents since 2000.

Between July 1, 2005 and July 1, 2006, Schuylkill County gained 409 people (+0.3 percent), the first estimated population increase in the county since census 2000. According to 2005 municipal population estimates, Tremont township (+6.5 percent) Deer Lake Borough (4.2 percent) and West Penn Township (+3.3 percent) led county municipalities in percent increase while West Penn (+129), North Manheim (+99) and South Manheim (+57) townships gained the most residents. Pottsville City (-97) experienced the largest population decrease during this period.<sup>i</sup>

The median age in Schuylkill County as of Census 2000 was 40.9 years. Just under 20 percent of the county's population was 65 years of age or older. The highest proportion of persons 65 or older was in Coaldale and Shenandoah Boroughs (28.5 percent), while the lowest was in Foster Township (6.5 percent). As of 2000, the county's population was still majority White (96.6 percent). Blacks or African Americans were the next largest group (2.1 percent) while persons of Hispanic or Latino origin accounted for 1.1 percent of the population.<sup>ii</sup> The largest minority populations by far were located in Foster and West Mahanoy Townships where Whites comprised just 53.2 and 69.5 percent of the populations, respectively. In both townships, the next largest group was Black or African American (Foster 43.2 percent) (West Mahanoy 27.0 percent). Persons of Hispanic or Latino origin accounted for 17.7 percent of Foster Township's population and 5.1 percent of West Mahanoy Township's population (Table 1, Map 1).<sup>iii</sup>

**Table 1. Annual Estimates of the Population for Minor Civil Divisions in Pennsylvania, Listed Alphabetically Within County: April 1, 2000 to July 1, 2005**

Geographic Area	Population estimates		April 1, 2000	July 1, 2004 to July 1, 2005 Numeric Change	July 1, 2004 to July 1, 2005 Percent Change	Estimates Base to July 1, 2005 Numeric Change	Estimates Base to July 1, 2005 Percent Change
	July 1, 2005	July 1, 2004	Estimates base				
<b>Schuylkill County</b>	<b>147,447</b>	<b>147,410</b>	<b>150,336</b>	<b>37</b>	<b>0.0</b>	<b>-2,889</b>	<b>-1.9</b>
Ashland borough	3,159	3,171	3,283	-12	-0.4	-124	-3.8
Auburn borough	813	815	839	-2	-0.2	-26	-3.1
Barry township	987	978	967	9	0.9	20	2.1
Blythe township	886	892	905	-6	-0.7	-19	-2.1
Branch township	1,813	1,821	1,871	-8	-0.4	-58	-3.1
Butler township	4,946	4,946	4,987	0	0.0	-41	-0.8
Cass township	1,815	1,811	1,840	4	0.2	-25	-1.4
Coaldale borough	2,170	2,191	2,295	-21	-1.0	-125	-5.4
Cressona borough	1,563	1,561	1,635	2	0.1	-72	-4.4
Deer Lake borough	575	552	528	23	4.2	47	8.9
Delano township	493	489	487	4	0.8	6	1.2
East Brunswick township	1,653	1,631	1,601	22	1.3	52	3.2
East Norwegian township	845	845	864	0	0.0	-19	-2.2
East Union township	1,442	1,429	1,419	13	0.9	23	1.6
Eldred township	775	757	719	18	2.4	56	7.8
Foster township	281	282	268	-1	-0.4	13	4.9
Frackville borough	4,199	4,215	4,361	-16	-0.4	-162	-3.7
Frailey township	429	424	416	5	1.2	13	3.1
Gilberton borough	838	841	867	-3	-0.4	-29	-3.3
Girardville borough	1,674	1,681	1,742	-7	-0.4	-68	-3.9
Gordon borough	753	756	781	-3	-0.4	-28	-3.6
Hegins township	3,401	3,407	3,519	-6	-0.2	-118	-3.4
Hubley township	907	902	889	5	0.6	18	2.0
Kline township	1,508	1,514	1,591	-6	-0.4	-83	-5.2
Landingville borough	171	171	175	0	0.0	-4	-2.3
McAdoo borough	2,140	2,159	2,274	-19	-0.9	-134	-5.9
Mahanoy township	3,426	3,413	3,093	13	0.4	333	10.8
Mahanoy City borough	4,462	4,481	4,647	-19	-0.4	-185	-4.0
Mechanicsville borough	497	499	515	-2	-0.4	-18	-3.5
Middleport borough	441	443	458	-2	-0.5	-17	-3.7
Minersville borough	4,337	4,379	4,552	-42	-1.0	-215	-4.7
Mount Carbon borough	84	84	87	0	0.0	-3	-3.4

**Table 1 (Continued). Annual Estimates of the Population for Minor Civil Divisions in Pennsylvania, Listed Alphabetically Within County: April 1, 2000 to July 1, 2005**

Geographic Area	Population estimates		April 1, 2000	July 1, 2004 to July 1, 2005 Numeric Change	July 1, 2004 to July 1, 2005 Percent Change	Estimates Base to July 1, 2005 Numeric Change	Estimates Base to July 1, 2005 Percent Change
	July 1, 2005	July 1, 2004	Estimates base				
New Castle township	391	384	395	7	1.8	-4	-1.0
New Philadelphia borough	1,109	1,112	1,149	-3	-0.3	-40	-3.5
New Ringgold borough	283	283	291	0	0.0	-8	-2.7
North Manheim township	3,559	3,460	3,479	99	2.9	80	2.3
North Union township	1,245	1,234	1,225	11	0.9	20	1.6
Norwegian township	2,161	2,161	2,172	0	0.0	-11	-0.5
Orwigsburg borough	2,995	3,007	3,106	-12	-0.4	-111	-3.6
Palo Alto borough	1,016	1,019	1,052	-3	-0.3	-36	-3.4
Pine Grove borough	2,079	2,086	2,154	-7	-0.3	-75	-3.5
Pine Grove township	3,977	3,955	3,930	22	0.6	47	1.2
Port Carbon borough	1,919	1,927	2,019	-8	-0.4	-100	-5.0
Port Clinton borough	279	279	288	0	0.0	-9	-3.1
Porter township	2,016	2,009	2,032	7	0.3	-16	-0.8
Pottsville city	14,764	14,861	15,549	-97	-0.7	-785	-5.0
Reilly township	825	815	802	10	1.2	23	2.9
Ringtown borough	783	788	826	-5	-0.6	-43	-5.2
Rush township	3,649	3,672	3,765	-23	-0.6	-116	-3.1
Ryan township	2,536	2,536	2,461	0	0.0	75	3.0
St. Clair borough	3,064	3,092	3,254	-28	-0.9	-190	-5.8
Schuylkill township	1,108	1,105	1,123	3	0.3	-15	-1.3
Schuylkill Haven borough	5,283	5,328	5,548	-45	-0.8	-265	-4.8
Shenandoah borough	5,296	5,347	5,624	-51	-1.0	-328	-5.8
South Manheim township	2,319	2,262	2,191	57	2.5	128	5.8
Tamaqua borough	6,754	6,818	7,174	-64	-0.9	-420	-5.9
Tower City borough	1,343	1,349	1,396	-6	-0.4	-53	-3.8
Tremont borough	1,725	1,731	1,784	-6	-0.3	-59	-3.3
Tremont township	326	306	250	20	6.5	76	30.4
Union township	1,338	1,324	1,308	14	1.1	30	2.3
Upper Mahantongo township	680	669	652	11	1.6	28	4.3
Walker township	939	934	937	5	0.5	2	0.2
Washington township	2,782	2,761	2,750	21	0.8	32	1.2
Wayne township	4,873	4,844	4,721	29	0.6	152	3.2
West Brunswick township	3,421	3,411	3,428	10	0.3	-7	-0.2
West Mahanoy township	3,038	3,041	3,175	-3	-0.1	-137	-4.3
West Penn township	4,089	3,960	3,851	129	3.3	238	6.2

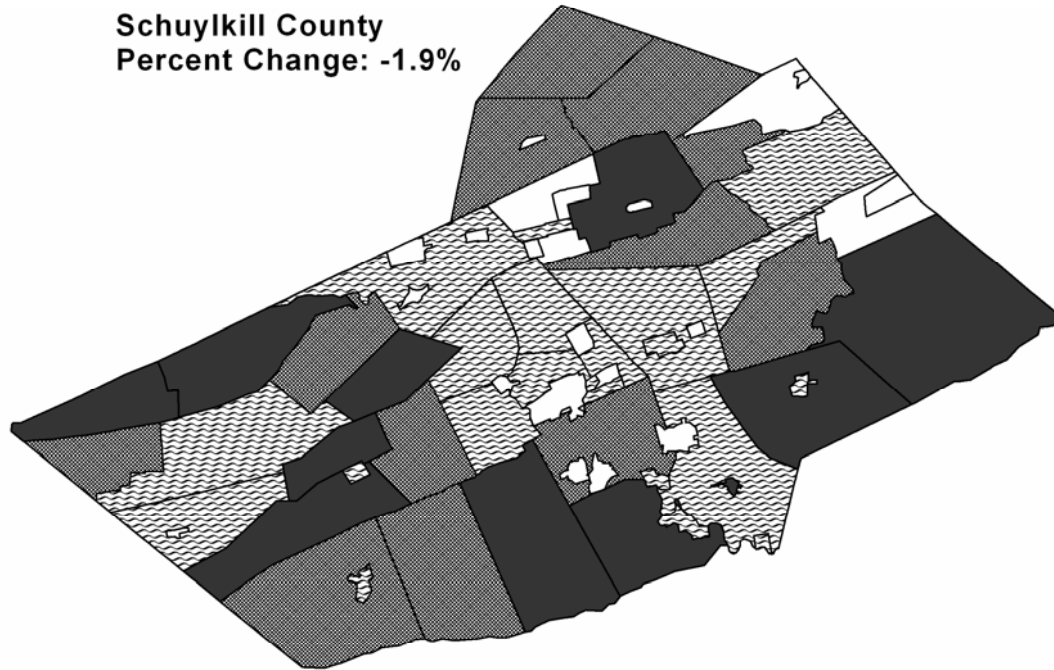
Source: U.S. Census Bureau, Population Division

# Estimated Population Percent Change

April 1, 2000 Estimate Base to July 1, 2005

Schuykill Municipalities 2005

Schuykill County  
Percent Change: -1.9%



## Percent Change



Prepared by:  
The Pennsylvania State Data Center  
<http://pasdc.hbg.psu.edu/>



Source: U.S. Department of Commerce  
United States Census, Population Division



Institute of State and Regional Affairs

### **Households, Household Type, Average Family Size, Family Relationships**

In 2000, 95.2 percent of Schuylkill County's population resided in households, the remaining 4.8 percent were housed in group quarters.<sup>iv</sup> The Census Bureau reports that there were 60,530 households in the county in 2000. More than 40,000, or 66.3 percent, were family households with an average family size of 2.93. In 2000, 51.4 percent were married couple households, 19.9 percent were married couple households with own children (under 18), and 4.8 percent were comprised of single females with (own) children. The highest proportion of single female parent households was in Landingville Borough (7.4 percent).<sup>v</sup>

As of 2000, 56.4 percent of the county's population 15 years and over was married (except separated), just 7.8 percent were divorced. Some 2,184 grandparents lived in households with their own grandchildren and 39.2 percent of them were responsible for caring for those grandchildren.<sup>vi</sup>

### **Housing stock**

There were 67,806 housing units in Schuylkill County in 2000, 89.3 percent were occupied. Homeowner and rental vacancy rates were 2.6 and 9.5 percent, respectively. Seventy-eight percent of all homes were owner-occupied while 22.0 percent were renter-occupied. The highest rates of home ownership occurred in Deer Lake Borough (96.6 percent) and South Manheim Township (94.1 percent), while Pottsville City had the lowest rate of ownership (62.4 percent).<sup>vii</sup> Building permits issued in 2005 totalled 543, a 54.3 percent increase over 2000.<sup>viii</sup>

The majority of homes (77.5 percent) in Schuylkill were valued at \$100,000 or less in 2000, with 38.3 percent valued at less than \$50,000 and 39.2 percent valued between \$50,000 and 99,000. The median value of owner-occupied housing units was \$63,300. Walker Township (\$118,800) led the eight municipalities with median housing values of more than \$100,000. Gilberton Borough (\$25,100) had the lowest median housing value. Median gross rent for the county was \$379 in 2000. Rent was highest in Port Clinton (\$514) and Deer Lake Boroughs (\$513) and lowest in Pottsville City (\$324).

Over half of the housing units in Schuylkill County were built in 1939 or earlier, just 6.9 percent have been built since 1990. The median number of rooms in county housing units was 6.1. Sixty percent of homes utilized a house heating fuel such as oil or kerosene. An estimated 28.3 percent of renters and 19.3 percent of homeowners had

housing problems in 2000, meaning a cost burden greater than 30% of income, and/or overcrowding, and/or the unit lacked complete kitchen or plumbing facilities. (Chart 1)<sup>ix</sup>

**Table 2. Selected Housing Unit Data, Schuylkill County Subdivisions: April 1, 2000**

<b>Geographic Area</b>	<b>Total housing units; Number</b>	<b>Owner-occupied housing units; Percent</b>	<b>Renter-occupied housing units; Percent</b>	<b>Specified owner-occupied units; Value; Median (dollars); Number</b>	<b>Specified renter-occupied units; Gross rent; Median (dollars); Number</b>	<b>Total housing units; Rooms; Median (rooms); Number</b>
<b>Schuylkill County</b>	<b>67,806</b>	<b>78</b>	<b>22</b>	<b>63,300</b>	<b>379</b>	<b>6.1</b>
Ashland borough	1,724	69.2	30.8	37,200	364	6.2
Auburn borough	338	81.8	18.2	71,900	462	5.9
Barry township	451	89.5	10.5	83,500	325	5.8
Blythe township	420	81.3	18.7	47,000	368	6.1
Branch township	789	92	8	87,500	429	6.4
Butler township	1,540	91.4	8.6	79,000	439	6.6
Cass township	845	87.8	12.2	53,500	381	6.1
Coaldale borough	1,211	77.2	22.8	40,900	357	5.9
Cressona borough	709	74.7	25.3	69,100	510	6
Deer Lake borough	221	96.6	3.4	98,400	513	6.3
Delano township	221	91	9	34,500	508	6.6
East Brunswick township	683	85.2	14.8	102,800	457	6.1
East Norwegian township	380	89.6	10.4	57,300	433	6.1
East Union township	731	83.8	16.2	69,100	438	5.9
Eldred township	291	84.1	15.9	80,600	340	6.3
Foster township	120	91.4	8.6	50,000	488	6.3
Frackville borough	2,094	71.4	28.6	57,400	394	5.8
Frailey township	188	91.4	8.6	44,600	329	6.3
Gilberton borough	474	85.5	14.5	25,100	336	6
Girardville borough	885	79	21	28,800	343	6.4
Gordon borough	341	79.8	20.2	60,300	402	6.3
Hegins township	1,540	83	17	75,600	409	6.2
Hubley township	369	81.7	18.3	71,000	413	6
Kline township	743	84.5	15.5	72,400	453	6
Landingville borough	81	88.2	11.8	72,500	425	6
McAdoo borough	1,211	65.6	34.4	54,200	375	5.7
Mahanoy township	488	92.4	7.6	38,300	397	6.2
Mahanoy City borough	2,595	77.2	22.8	26,700	366	6.1
Mechanicsville borough	248	89.5	10.5	64,400	400	6.1
Middleport borough	246	74.5	25.5	44,400	380	6.1
Minersville borough	2,312	68.6	31.4	44,300	420	6.2
Mount Carbon borough	49	87.2	12.8	40,800	342	5.9

**Table 2 (Continued). Selected Housing Unit Data, Schuylkill County Subdivisions: April 1, 2000**

<b>Geographic Area</b>	<b>Total housing units; Number</b>	<b>Owner-occupied housing units; Percent</b>	<b>Renter-occupied housing units; Percent</b>	<b>Specified owner-occupied units; Value; Median (dollars); Number</b>	<b>Specified renter-occupied units; Gross rent; Median (dollars); Number</b>	<b>Total housing units; Rooms; Median (rooms); Number</b>
New Castle township	205	82.8	17.2	46,700	450	6
New Philadelphia borough	585	71.8	28.2	41,700	340	6.5
New Ringgold borough	124	71.2	28.8	68,600	438	5.7
North Manheim township	1,337	86.5	13.5	104,200	425	6
North Union township	598	81.9	18.1	85,700	368	6.1
Norwegian township	896	86.8	13.2	98,600	393	6.6
Orwigsburg borough	1,217	72.8	27.2	93,900	396	6.2
Palo Alto borough	460	88.1	11.9	50,100	406	6.1
Pine Grove borough	937	66.5	33.5	62,800	389	5.7
Pine Grove township	1,696	85.7	14.3	92,800	414	5.7
Port Carbon borough	930	77.8	22.2	57,400	393	6.2
Port Clinton borough	141	72	28	68,200	514	5.8
Porter township	926	85.4	14.6	56,800	390	6.1
Pottsville city	7,343	62.4	37.6	57,100	324	5.9
Reilly township	355	88.3	11.7	51,500	363	6.1
Ringtown borough	336	87.1	12.9	78,000	475	6.5
Rush township	1,561	92	8	98,200	413	6.4
Ryan township	615	91.2	8.8	96,400	420	6
St. Clair borough	1,647	72.7	27.3	45,700	343	6
Schuylkill township	568	91.1	8.9	47,600	379	6
Schuylkill Haven borough	2,551	67.9	32.1	66,600	399	5.7
Shenandoah borough	3,339	68.6	31.4	26,000	327	5.9
South Manheim township	959	94.1	5.9	117,800	469	6.4
Tamaqua borough	3,602	68.3	31.7	46,700	372	6
Tower City borough	684	70.6	29.4	48,400	373	6.1
Tremont borough	743	78.1	21.9	45,600	360	5.9
Tremont township	95	87.4	12.6	67,800	325	6.1
Union township	602	90.5	9.5	96,600	394	6
Upper Mahantongo township	274	84	16	68,200	403	6.2
Walker township	383	85	15	118,800	463	6.3
Washington township	1,082	86.8	13.2	107,200	418	5.6
Wayne township	1,972	89.8	10.2	113,700	464	6
West Brunswick township	1,397	85.9	14.1	106,600	488	6.1
West Mahanoy township	1,503	92.6	7.4	45,900	441	6.4
West Penn township	1,605	85.6	14.4	108,500	396	6.2

Source: U.S. Census Bureau, Census 2000, DP-4

## Income & Poverty

Median household income in Schuylkill County in 1999 was \$32,699. This is below the state's median household income, which was \$40,106, and the national median household income, which is \$41,994.

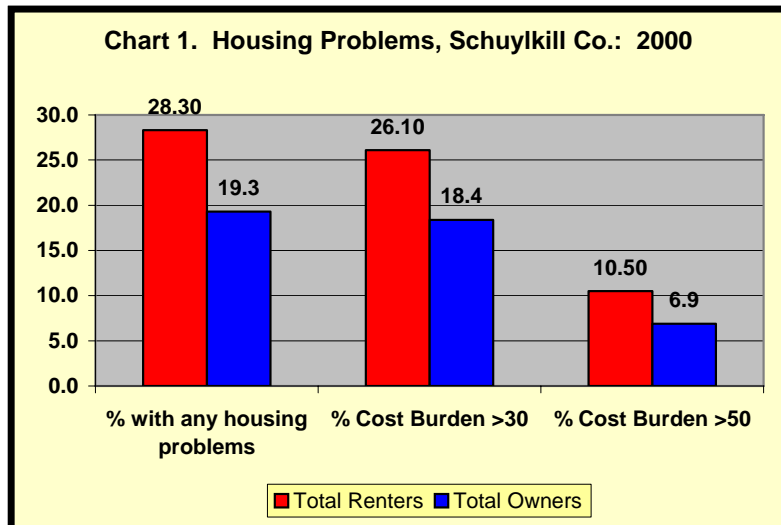
More than 13,000 individuals, or 9.5 percent of the county population, were living in poverty in 2000. This figure is lower than the state's, 11.0 percent (1,304,117 individuals in total), and the nation's, 12.4 percent (33,899,812 individuals in poverty). In terms of individual poverty rates, Shenandoah (20.1 percent) and Manahoy City Boroughs (17.4 percent), topped all Schuylkill municipalities. Schuylkill County ranked 42<sup>nd</sup> among Pennsylvania Counties in terms of the percent of individuals in poverty in 1999.

Of the population less than five years old in Schuylkill County, 14.2 percent were in poverty, the largest proportion of any age group. Among the adult population, persons under the age of 75 were in poverty less often than the county average (8.2 percent for both 18-64 and 65-74). More than 13 percent of persons above the age of 75, however, were in poverty in 1999. (See Chart 2)

Over 2,600 families (6.7 percent) living in Schuylkill County were below the poverty level in 2000 (Map 2). This was lower than the state total, which had 7.8 percent of families in poverty (250,296 families). As a whole, the United States had 9.2 percent of its families in poverty in 2000, a total of 6,620,945 families.

Sixty-seven percent of the families in poverty had children in the household and 39.1 percent were single parent female-headed households with children. Pottsville City had the largest number of families in poverty (386) while Shenandoah Borough (16.2 percent) had the highest poverty rate.

Twenty-one percent of single-female family householders were in poverty in 1999, as compared to 9.2 percent of single-male family householders, and 3.9 percent of married-couple householders of either



gender (See Chart 3). Schuylkill County was ranked second among all Pennsylvania counties in its percentage of single-male headed family households (6.9 percent, 2,778 families), and 19<sup>th</sup> in terms of percent single-female headed family households (14.3 percent, 5,746 families). Schuylkill County was ranked 57<sup>th</sup> in its percentage of married-couple families (78.8 percent, 31,713 families).

**Table 3. Income and Poverty, Schuylkill County and Neighboring Counties**

<b>Geographic Area</b>	<b>Median household income in 1999</b>	<b>Median family income in 1999</b>	<b>Median Individual Earnings in 1999</b>	<b>Families; Percent Below Poverty Level</b>	<b>Individuals; Percent Below Poverty Level</b>	<b>Related Children under 18 years; Percent Below Poverty Level</b>
<b><i>Schuylkill County</i></b>	<b>\$ 32,699</b>	<b>\$ 41,279</b>	<b>\$ 20,783</b>	<b>6.7%</b>	<b>9.5%</b>	<b>11.6%</b>
Berks County	\$ 44,714	\$ 52,997	\$ 25,171	6.3%	9.4%	13.0%
Carbon County	\$ 35,113	\$ 42,118	\$ 21,755	6.8%	9.5%	13.6%
Columbia County	\$ 34,094	\$ 41,398	\$ 18,020	7.1%	13.1%	13.8%
Dauphin County	\$ 41,507	\$ 50,974	\$ 25,726	7.5%	9.7%	13.9%
Lebanon County	\$ 40,838	\$ 48,906	\$ 23,030	5.4%	7.5%	10.8%
Lehigh County	\$ 43,449	\$ 53,147	\$ 25,133	6.6%	9.3%	13.7%
Luzerne County	\$ 33,771	\$ 43,335	\$ 21,142	8.1%	11.1%	14.7%
Northumberland County	\$ 31,314	\$ 39,551	\$ 19,965	8.7%	11.9%	16.0%
<i>United States</i>	\$ 41,994	\$ 50,046	\$ 23,755	9.2%	12.4%	16.1%
<i>Northeast Region</i>	\$ 45,481	\$ 54,820	\$ 26,419	8.4%	11.4%	14.9%
<i>Pennsylvania</i>	\$ 40,106	\$ 49,184	\$ 23,714	7.8%	11.0%	14.3%

Schuylkill County had lower median household income, median family income, and median individual earnings than all of its neighboring counties except Northumberland County. The family and individual poverty rates in Schuylkill County, however, were lower than all of the neighboring counties except Berks, Lebanon and Lehigh counties, all of which had notably higher median household and family incomes.(See Table 3)

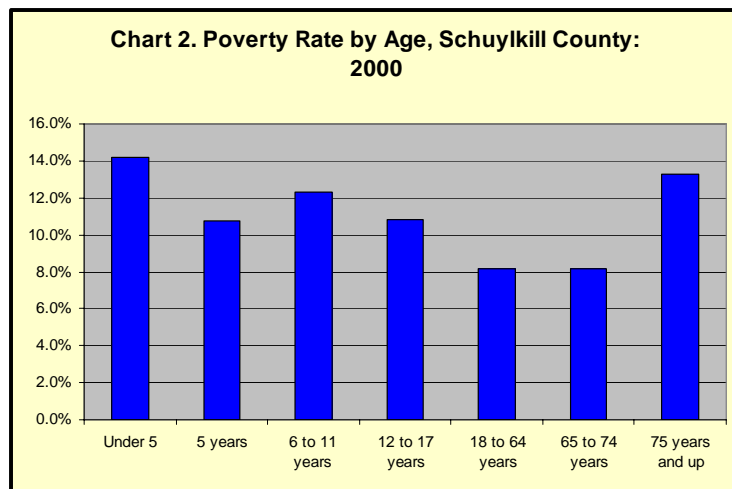
Three-quarters (75.0 percent) of the individuals in poverty in Schuylkill County in 1999 lived in urban areas, while only 62.7 percent of the population overall lived in urban areas. Twenty-five percent of the individuals in poverty in 1999 lived in rural areas, a smaller proportion than lived in rural areas overall, 37.3 percent.

More than half of municipalities had median household incomes higher than the county, led by Deer Lake Borough (\$52,386). Thirteen municipalities had median household incomes of \$40,000 or higher. At \$18,714, Shenandoah Borough had the lowest median

household income in 1999. Median family income in Schuylkill County in 1999 was \$41,279. Deer Lake Borough (\$61,042) also led county municipalities in median family income (Table 4).

Mean earnings for households in Schuylkill County in 1999 were \$43,699, lower than the state mean earnings of \$54,209 and the national mean of \$56,604. Over 38 percent of households received Social Security income averaging \$10,958. In the state overall, 30.4 percent of households received Social Security Income, averaging \$11,717. Nationally, 25.7 percent of households receive Social Security Income, averaging \$11,320.

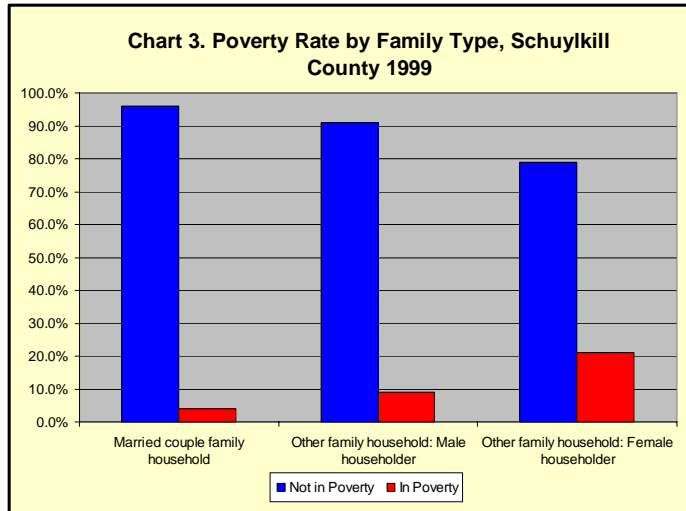
Coaldale Borough topped Schuylkill municipalities with 51.3 percent of households receiving social security income. Landingville and Mount Carbon Boroughs had the smallest percentage of households receiving Social Security income in 1999, with 16.4 percent and 18.6 percent, respectively.



Another 4.3 percent of county households received Supplemental Security Income averaging \$6,034, and 1.9 percent of households received Public Assistance Income averaging \$2,404. Overall in Pennsylvania, 4.3 percent of households received Supplemental Security Income, averaging \$6,523, and 3.1 percent of households received public assistance income, with a mean of \$2,848. Nationally, 4.4 percent of households received Supplemental Security Income, averaging \$6,320 and 3.4 percent of households received public assistance income with an average of \$3,032.

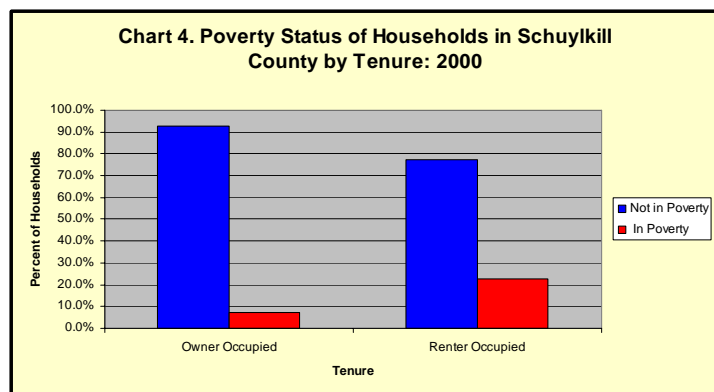
Persons with some high school education but no diploma had the highest rate of poverty in Schuylkill County (15.0 percent), higher than persons with a high school diploma (8.0 percent), some college (6.2 percent), or a college degree (2.8 percent). Schuylkill County ranked 5<sup>th</sup> among Pennsylvania counties in terms of the percentage of its population with some high-school but no degree (16.3 percent). Conversely, it ranked 53<sup>rd</sup> and 55<sup>th</sup> in terms of the percentage of its population with some college (12.4 percent) and a college degree (16.5 percent), respectively

Mount Carbon Borough (14.0 percent) by far had the highest proportion of households receiving Supplemental Security Income, while Mahanoy City Borough (4.5 percent) led municipalities in percent of its households receiving public assistance. A November 2006 cash assistance report from the Pennsylvania



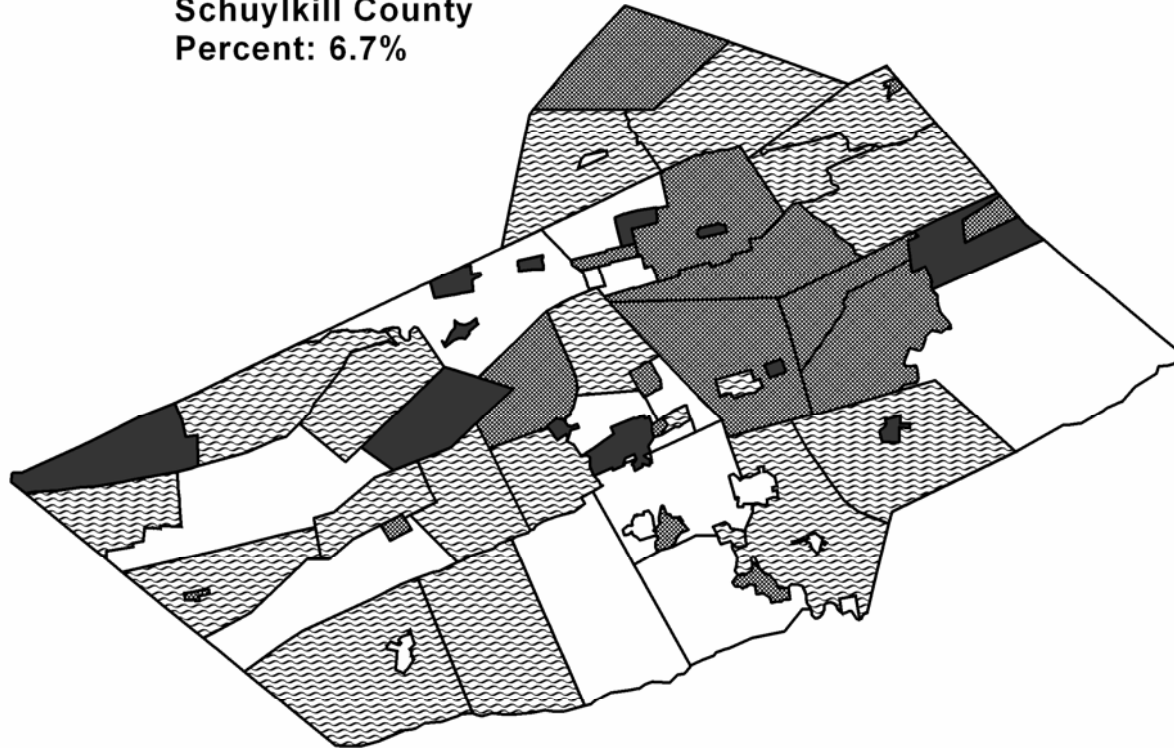
Department of Public Welfare indicates that about 1,566 persons, or 1.1 percent of the total population were receiving temporary or other forms of assistance at that time. That same month 5,264 households and 11,441 persons, 7.7 percent of the county’s population, were eligible for food stamps; but just 1,222 persons or 570 households received public assistance; 10.8 percent of those households eligible. Nearly 15 percent of the population or 21,627 people were medical assistance eligible.

Renter-occupied households in Schuylkill County are more than three times as likely to be in poverty as owner-occupied households (22.8 percent and 7.2 percent, respectively). (See Chart 4.) Overall, renter-occupied households account for 47.6 percent of all households in poverty, even though only 22.1 percent of all households in Schuylkill County are renter-occupied. Schuylkill County ranks 17<sup>th</sup> among all Pennsylvania counties in its proportion of owner-occupied housing.



**Percent of Families in Poverty**  
**Poverty status in 1999**  
 Schuylkill Municipalities 2000

**Schuylkill County**  
**Percent: 6.7%**



**Percent**

- Less than 4%
- 4% to 6.7%
- 6.8% to 9.5%
- Greater than 9.5%

Prepared by:  
 The Pennsylvania State Date Center  
<http://pasdc.hbg.psu.edu/>



Source: U.S. Department of Commerce  
 United States Census, Population Division



Institute of State and Regional Affairs

**Table 4. Income and Poverty, Schuylkill County Subdivisions: April 1, 2000**

<b>Geographic Area</b>	<b>Median household income in 1999</b>	<b>Median family income in 1999</b>	<b>Mean household earnings in 1999</b>	<b>Families; Percent below poverty level</b>	<b>Individuals; Percent below poverty level</b>	<b>Related children under 18 years; Percent below poverty level</b>
<b>Schuylkill County</b>	<b>\$ 32,699</b>	<b>\$ 41,279</b>	<b>\$ 43,699</b>	<b>6.7</b>	<b>9.5</b>	<b>11.6</b>
Ashland borough	\$ 27,234	\$ 34,688	\$ 36,792	11.1	12.8	16.1
Auburn borough	\$ 36,905	\$ 40,833	\$ 39,189	8.3	7.7	12.4
Barry township	\$ 39,861	\$ 45,658	\$ 48,725	4.7	5.2	5.1
Blythe township	\$ 34,044	\$ 43,672	\$ 39,279	9.3	10.3	14.5
Branch township	\$ 38,125	\$ 46,324	\$ 49,227	6.1	6.6	3.5
Butler township	\$ 39,375	\$ 48,886	\$ 49,708	2.6	5.2	5.5
Cass township	\$ 31,792	\$ 39,028	\$ 38,547	9.3	12.5	19.3
Coaldale borough	\$ 23,362	\$ 31,905	\$ 32,246	8.3	13.2	23.7
Cressona borough	\$ 39,783	\$ 42,292	\$ 44,823	1.3	3.7	2.8
Deer Lake borough	\$ 52,386	\$ 61,042	\$ 69,525	1.3	4	0
Delano township	\$ 30,250	\$ 37,500	\$ 36,838	6.6	6.1	2.2
East Brunswick township	\$ 39,821	\$ 45,893	\$ 52,425	4.1	5	4.1
East Norwegian township	\$ 37,100	\$ 41,875	\$ 49,415	3.1	4.7	3.1
East Union township	\$ 31,576	\$ 39,063	\$ 43,883	4	6.3	5.8
Eldred township	\$ 34,667	\$ 37,083	\$ 42,348	5.7	6.2	5.5
Foster township	\$ 31,042	\$ 29,688	\$ 33,485	16	15.9	24.1
Frackville borough	\$ 32,071	\$ 47,553	\$ 45,952	2.7	7.4	4.6
Frailey township	\$ 32,679	\$ 36,250	\$ 35,502	4.1	4	1.9
Gilberton borough	\$ 24,792	\$ 34,500	\$ 33,111	9.5	10.6	12.4
Girardville borough	\$ 23,702	\$ 30,000	\$ 30,979	10.5	14.6	28.7
Gordon borough	\$ 30,855	\$ 40,714	\$ 39,460	9.8	11.3	12.2
Hegins township	\$ 36,091	\$ 43,207	\$ 44,442	3	6.3	11.9
Hubley township	\$ 41,250	\$ 46,538	\$ 48,376	4.2	5.7	4.6
Kline township	\$ 30,188	\$ 40,333	\$ 38,531	6.3	8.2	10.6
Landingville borough	\$ 40,417	\$ 41,667	\$ 41,642	4.2	9.5	12.8
McAdoo borough	\$ 25,721	\$ 31,625	\$ 33,936	9.1	14.5	24.7
Mahanoy township	\$ 30,625	\$ 35,625	\$ 39,408	9.2	13.4	16.8
Mahanoy City borough	\$ 24,347	\$ 32,033	\$ 31,824	12.6	17.4	22.3
Mechanicsville borough	\$ 34,583	\$ 40,556	\$ 44,206	8	12.1	18.7
Middleport borough	\$ 30,114	\$ 34,688	\$ 38,750	10.3	9.5	12.4
Minersville borough	\$ 28,373	\$ 36,759	\$ 37,661	10.8	15	17.5
Mount Carbon borough	\$ 34,688	\$ 46,875	\$ 38,019	0	7.1	0

**Table 4 (Continued). Income and Poverty, Schuylkill County Subdivisions: April 1, 2000**

<b>Geographic Area</b>	<b>Median household income in 1999</b>	<b>Median family income in 1999</b>	<b>Mean household earnings in 1999</b>	<b>Families; Percent below poverty level</b>	<b>Individuals; Percent below poverty level</b>	<b>Related children under 18 years; Percent below poverty level</b>
New Castle township	\$ 24,583	\$ 32,917	\$ 33,390	5.5	6	3.5
New Philadelphia borough	\$ 27,159	\$ 38,229	\$ 37,143	6.3	10.6	17
New Ringgold borough	\$ 27,083	\$ 32,250	\$ 31,526	11.1	10.2	13.6
North Manheim township	\$ 40,464	\$ 51,250	\$ 55,765	3.9	7.1	4.9
North Union township	\$ 34,659	\$ 42,262	\$ 45,085	6.8	9.1	15.6
Norwegian township	\$ 42,540	\$ 48,603	\$ 52,805	0.8	3.3	1.9
Orwigsburg borough	\$ 42,400	\$ 55,313	\$ 60,908	2.5	2.7	0.7
Palo Alto borough	\$ 35,729	\$ 41,667	\$ 42,907	3.5	6.9	4.3
Pine Grove borough	\$ 35,865	\$ 49,737	\$ 49,955	2.6	5.9	2.9
Pine Grove township	\$ 38,933	\$ 42,813	\$ 43,474	5.3	6.5	6.6
Port Carbon borough	\$ 30,875	\$ 37,939	\$ 38,808	5.2	7.2	8.4
Port Clinton borough	\$ 28,333	\$ 36,071	\$ 38,679	3.7	7	15
Porter township	\$ 36,957	\$ 43,684	\$ 45,046	4.2	5.9	4.5
Pottsville city	\$ 30,137	\$ 41,124	\$ 45,639	10.1	13.9	15.4
Reilly township	\$ 28,646	\$ 40,500	\$ 36,334	5.8	10.6	17.9
Ringtown borough	\$ 36,563	\$ 43,125	\$ 43,309	2.6	4.6	4.4
Rush township	\$ 42,664	\$ 45,750	\$ 45,301	4.3	6.3	7.7
Ryan township	\$ 43,456	\$ 48,947	\$ 54,073	6.8	7.9	8.3
St. Clair borough	\$ 28,161	\$ 35,024	\$ 34,471	7.7	11.8	14.6
Schuylkill township	\$ 32,098	\$ 38,182	\$ 40,461	6.9	6.6	6.9
Schuylkill Haven borough	\$ 32,442	\$ 41,286	\$ 40,354	7.1	8.5	7.4
Shenandoah borough	\$ 18,714	\$ 26,910	\$ 32,453	16.2	20.1	32.3
South Manheim township	\$ 46,786	\$ 49,757	\$ 52,168	2	3	2.2
Tamaqua borough	\$ 27,899	\$ 36,406	\$ 37,767	11.1	14.9	24.1
Tower City borough	\$ 30,037	\$ 39,219	\$ 36,229	7.3	9.5	8.8
Tremont borough	\$ 30,167	\$ 35,326	\$ 38,550	9.5	13.1	28.2
Tremont township	\$ 34,000	\$ 44,375	\$ 42,617	2.8	9.4	2.2
Union township	\$ 35,524	\$ 44,286	\$ 45,906	4.2	6.9	8.2
Upper Mahantongo township	\$ 35,658	\$ 37,500	\$ 40,117	10	11.8	11
Walker township	\$ 44,167	\$ 51,146	\$ 47,419	7.6	10.1	22.2
Washington township	\$ 43,493	\$ 46,964	\$ 46,149	4.1	5.4	3.7
Wayne township	\$ 45,242	\$ 51,042	\$ 49,309	1.1	2.3	2.3
West Brunswick township	\$ 47,091	\$ 51,292	\$ 63,019	4.7	5.4	2.8
West Mahanoy township	\$ 32,979	\$ 39,114	\$ 48,087	3.3	5.2	6.4
West Penn township	\$ 39,276	\$ 47,341	\$ 47,087	3.5	5.1	2.8

## **Industry and Employment**

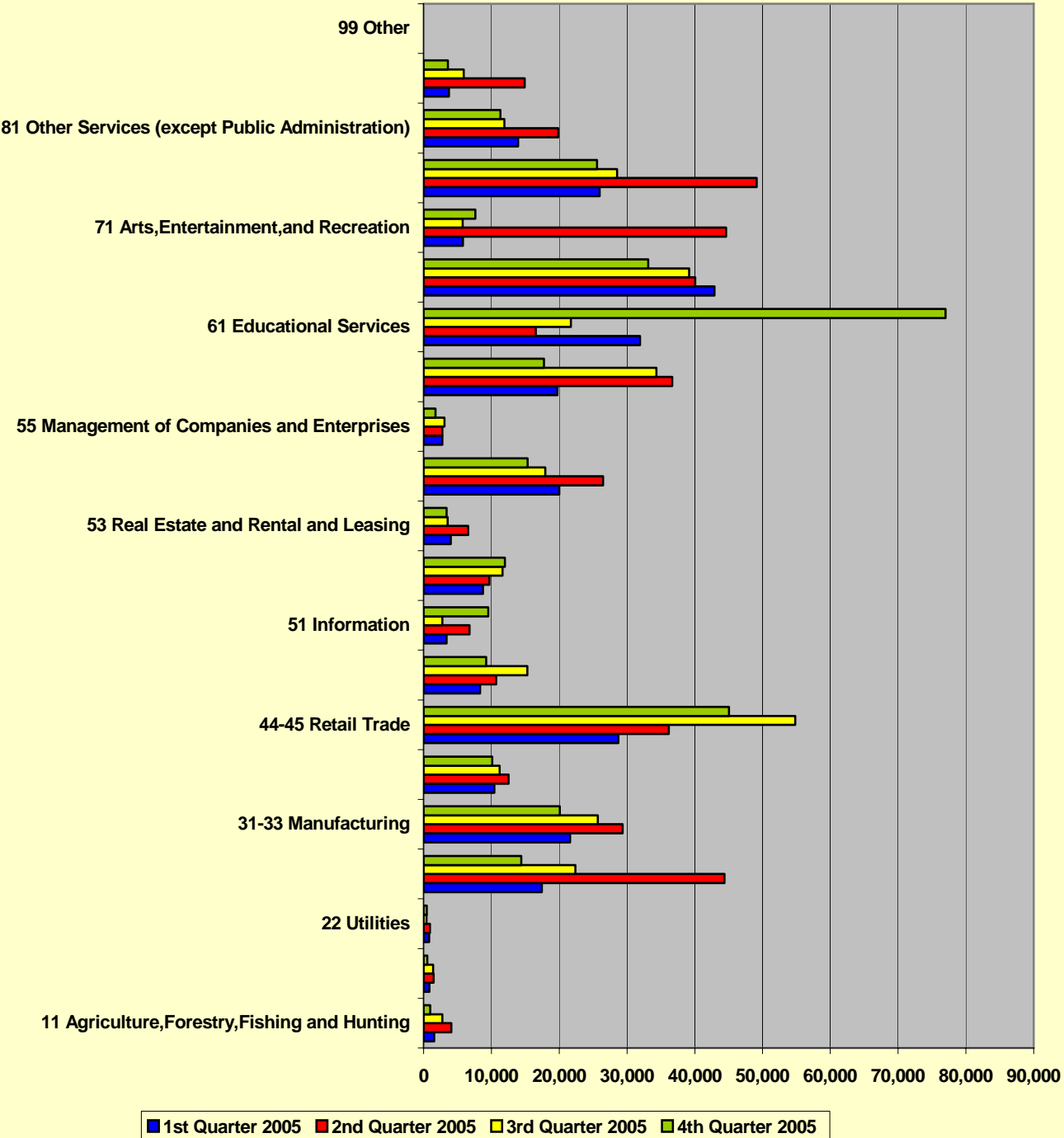
The Census Bureau reports that Schuylkill County's unemployment rate in 2000 was 3.2 percent, with 55.3 percent of the population 16 years or older in the labor force. However, data from the Pennsylvania Department of Labor indicates a much higher figure of 5.8 percent. The discrepancy between the statistics is a result of the differing methodologies used to collect the data, and the Labor data is probably more accurate. However, unemployment data from the Department of Labor is limited at the subcounty level. Census data indicates that in 2000, unemployment was highest in Mechanicsville Borough, which at 6.6 percent, was more than double the county rate, while no unemployment was recorded in Landingville and New Ringgold Boroughs.<sup>x</sup> Department of Labor data shows that county unemployment dropped slightly to 5.6 percent in 2006.

Production, transportation, and material moving jobs led occupational categories with the highest proportion of workers (26.9 percent) in 2000, followed by management, professional, and relation occupations (23.7 percent), and sales and office occupations (22.8 percent). Industry employment was concentrated in the Manufacturing (26.0 percent), Education, Health, and Social Services (19.5 percent), and Retail Trade (12.3 percent) industries, which together accounted for 57.8 percent of the county's employment in 2000. Manufacturing was an especially significant part of Schuylkill's local economies and comprised 20 percent or more employment in all but eight municipalities. In Landingville Borough (42.5 percent), Tremont Township (41.1 percent), Tremont Borough (40.6 percent), and Porter Township (40.3 percent) manufacturing jobs accounted for more than 40 percent of the total local employment. Educational, Health, and Social Services industry were also a significant component of local economies, accounting for 20 percent or more of jobs in 27 Schuylkill County municipalities.

Data from the 2005 Quarterly Census of Employment and Wages suggests this trend persists, with Manufacturing (26.3 percent), Health Care and Social Assistance (16.9 percent), and Retail Trade (14.9 percent) continuing to lead other industries in



**Chart 6. Job Creation by Industry, Schuylkill County, 1st - 4th Quarter 2005**



**Table 5. 2005 Employment And Wages Subsector (3 digit) data for Schuylkill County, Private**

<b>NAICS Code</b>	<b>Industry</b>	<b>Average Establishments</b>	<b>Average Employment</b>	<b>Average Weekly Wage</b>
111	Crop Production	20	432	\$439
112	Animal Production	4	120	\$479
113	Forestry and Logging	5	11	\$476
115	Agriculture & Forestry Support Activity	3	17	\$604
212	Mining (except Oil and Gas)	38	278	\$789
213	Support Activities for Mining	8	93	\$650
221	Utilities	17	232	\$1,112
236	Construction of Buildings	102	581	\$567
237	Heavy and Civil Engineering Construction	20	322	\$864
238	Specialty Trade Contractors	171	1,053	\$594
311	Food Manufacturing	20	823	\$577
312	Beverage & Tobacco Product Manufacturing	6	373	\$835
313	Textile Mills	5	490	\$619
314	Textile Product Mills	4	200	\$372
315	Apparel Manufacturing	17	1,188	\$417
316	Leather and Allied Product Manufacturing	***	***	***
321	Wood Product Manufacturing	17	1,308	\$656
322	Paper Manufacturing	3	440	\$790
323	Printing and Related Support Activities	9	74	\$526
325	Chemical Manufacturing	12	537	\$716
326	Plastics & Rubber Products Manufacturing	11	1,129	\$860
327	Nonmetallic Mineral Product Mfg	10	333	\$844
331	Primary Metal Manufacturing	9	1,374	\$916
332	Fabricated Metal Product Manufacturing	32	1,139	\$706
333	Machinery Manufacturing	19	725	\$718
334	Computer and Electronic Product Mfg	***	***	***
335	Electrical Equipment and Appliances	***	***	***
336	Transportation Equipment Manufacturing	6	432	\$686
337	Furniture and Related Product Mfg	6	89	\$709
339	Miscellaneous Manufacturing	9	220	\$602
423	Merchant Wholesalers, Durable Goods	68	1,070	\$643
424	Merchant Wholesalers, Nondurable Goods	35	344	\$550
425	Electronic Markets and Agents/Brokers	31	101	\$700
441	Motor Vehicle and Parts Dealers	73	778	\$516
442	Furniture and Home Furnishings Stores	12	91	\$533
443	Electronics and Appliance Stores	21	88	\$778
444	Building Material & Garden Supply Stores	46	576	\$567
445	Food and Beverage Stores	89	1,783	\$277
446	Health and Personal Care Stores	52	521	\$524
447	Gasoline Stations	69	545	\$276
448	Clothing and Clothing Accessories Stores	31	223	\$303

**Table 5 (Continued). 2005 Employment And Wages Subsector (3 digit) data for Schuylkill County, Private**

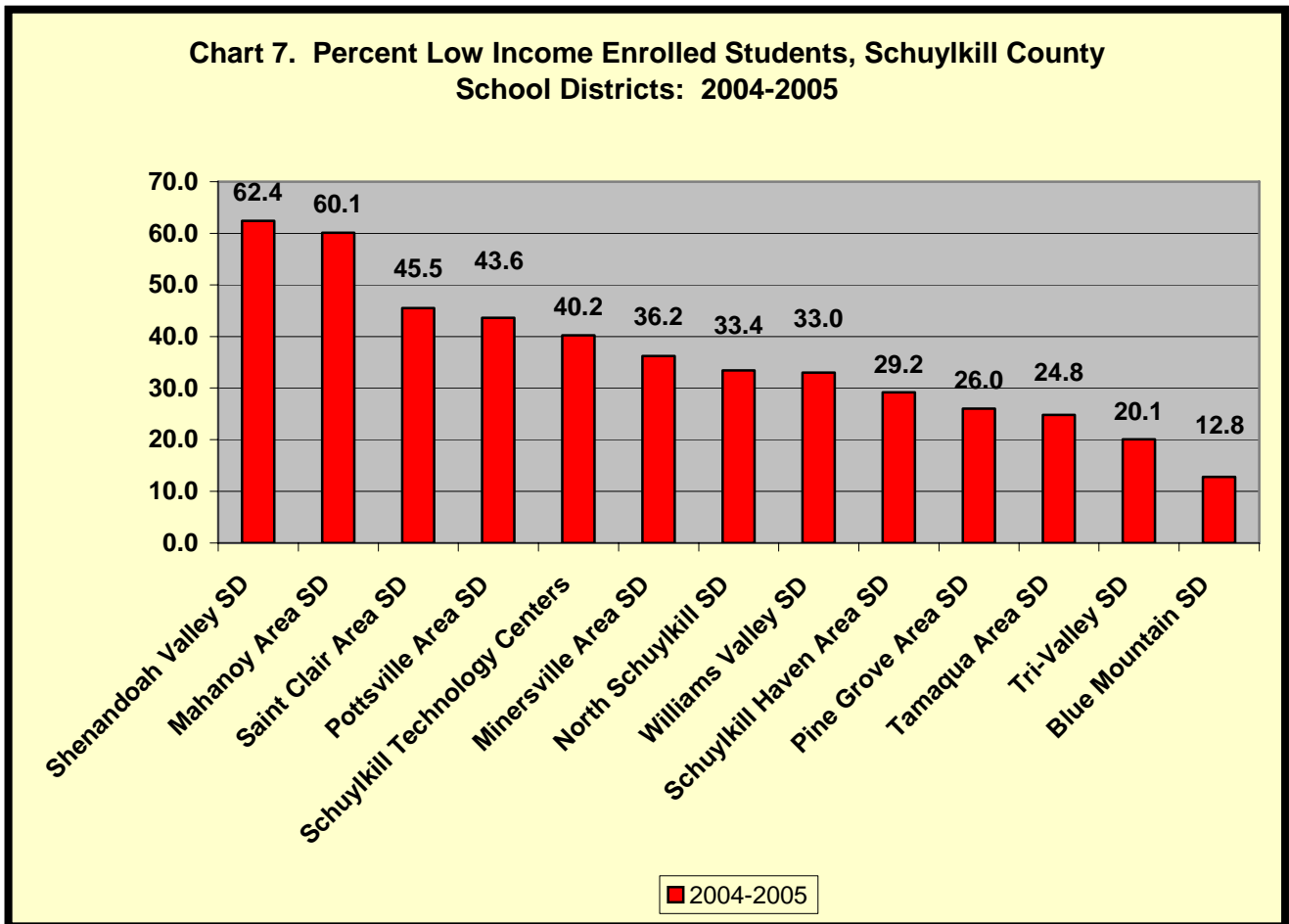
<b>NAICS Code</b>	<b>Industry</b>	<b>Average Establishments</b>	<b>Average Employment</b>	<b>Average Weekly Wage</b>
451	Sporting Goods/Hobby/Book/Music Stores	19	111	\$203
452	General Merchandise Stores	31	1,074	\$295
453	Miscellaneous Store Retailers	53	200	\$272
454	Nonstore Retailers	42	306	\$570
481	Air Transportation	***	***	***
484	Truck Transportation	77	925	\$701
485	Transit and Ground Passenger Transport	16	292	\$241
486	Pipeline Transportation	***	***	***
487	Scenic and Sightseeing Transportation	***	***	***
488	Support Activities for Transportation	***	***	***
492	Couriers and Messengers	8	170	\$698
493	Warehousing and Storage	8	1,370	\$558
511	Publishing Industries	8	258	\$752
512	Motion Picture & Sound Recording Ind	***	***	***
515	Broadcasting (except Internet)	***	***	***
517	Telecommunications	13	104	\$1,400
518	ISPs, Search Portals, & Data Processing	4	26	\$537
519	Other Information Services	15	62	\$227
522	Credit Intermediation & Related Activity	95	864	\$730
523	Financial Investment & Related Activity	14	28	\$739
524	Insurance Carriers & Related Activities	64	364	\$712
525	Funds, Trusts & Other Financial Vehicles	***	***	***
531	Real Estate	40	137	\$527
532	Rental and Leasing Services	27	159	\$493
541	Professional and Technical Services	147	909	\$687
551	Management of Companies and Enterprises	10	395	\$1,252
561	Administrative and Support Services	74	903	\$424
562	Waste Management and Remediation Service	14	216	\$708
611	Educational Services	31	473	\$442
621	Ambulatory Health Care Services	211	1,843	\$828
622	Hospitals	9	2,299	\$673
623	Nursing and Residential Care Facilities	34	1,796	\$472
624	Social Assistance	132	1,183	\$279
711	Performing Arts and Spectator Sports	4	25	\$223
713	Amusement, Gambling & Recreation Ind	33	239	\$233
721	Accommodation	16	147	\$187
722	Food Services and Drinking Places	258	2,696	\$201
811	Repair and Maintenance	106	499	\$491
812	Personal and Laundry Services	85	328	\$302
813	Membership Organizations & Associations	109	1,169	\$329
814	Private Households	97	125	\$209

Source: Pennsylvania Department of Labor and Industry - Quarterly Census of Employment and Wages

Employment (Chart 5). An analysis of 2005 quarterly job creation data points to similar indicators: strong growth in the Health Care and Social Assistance, Education, and Retail Trade industries (Chart 6).<sup>xi</sup>

**Education**

Of the population 25 years and over, 77.2 percent had attained a high school degree or higher in 2000. An additional 10.7 percent had a Bachelor’s degree or higher, and 3.7 percent had a graduate or professional degree.<sup>xii</sup> Between 2004 and 2005, the Pennsylvania Department of Education reported an increase in the dropout rate, from 1.9 to 2.2 in Schuylkill County, with the state’s average remained constant at 1.9. The Department reports that 35.9 percent of children enrolled in Schuylkill County school districts during the 2004-2005 school year were in low income families (Chart 7). The highest proportion of low income students were in the Shenandoah Valley (62.4 percent) and Mahanoy Area (60.1 percent) School Districts, while the lowest percentage was in the Blue Mountain School District (12.8 percent). An October 2006 report indicates 33.9 percent of children were eligible for free or reduced lunches, with 25.1 percent of those receiving free lunch.<sup>xiii</sup>



## Health

An estimated 12,663 people, or 8.8 percent of the population of Schuylkill County were uninsured in 2000, compared to 9.9 percent for the state as a whole. Of those, 2,021 or 6.8 percent of the population 18 and under were uninsured. Between 2003 and 2004 an average of 1,749 children were enrolled monthly in Pennsylvania's Child Health Insurance Program (CHIP), accounting for about 1.2 percent of the state total.<sup>xiv</sup>

Birth rates in Schuylkill are less favorable than the state. Between 2004 and 2005 the birth rate (per 1,000 women) was 9.9, compared to 11.9 for the state as a whole. Cumulative rates since 2000 drop to 9.6. Recent data also suggests that infant mortality is low. There were 11 infant deaths in 2005, just 7.2 percent of the total 1,531 births. However, the county's mortality rate is higher than the Commonwealth as a whole. The cumulative death rate for 2000-2005 was 13.9, compared to 10.4 for Pennsylvania.<sup>xv</sup>

## Transportation

Fifty three percent of Schuylkill households had 2 vehicles or more available in 2000. More than 92 percent of workers 16 years and over used a car, truck, or van to get to work, and 43.4 percent had a travel time to work of between 10 and 24 minutes. Workflow data show that the largest number of Schuylkill County residents, more than 43,000, stayed within the county to work, followed by Berks (5,790) and Luzerne (3,588). Northumberland (1,617) has the highest number of residents commuting to Schuylkill to work, followed by Carbon (1,435) and Luzerne (1,179) Counties.<sup>xvi</sup>

---

<sup>i</sup> U.S. Census Bureau, Population Division

<sup>ii</sup> The Census Bureau classifies Hispanic or Latino Origin as an ethnicity, not a race, thus persons of Hispanic or Latino Origin can also be White, Black or African American, etc.

<sup>iii</sup> U.S. Census Bureau, Census 2000, DP-1

<sup>iv</sup> The Census Bureau defines group quarters as any nontraditional living arrangement, i.e. prisons, nursing homes, dormitories, barracks, etc.

<sup>v</sup> U.S. Census Bureau, Census 2000, DP-1

<sup>vi</sup> U.S. Census Bureau, Census 2000, DP-2

<sup>vii</sup> U.S. Census Bureau, Census 2000, DP-1

<sup>viii</sup> U.S. Census Bureau/State of the Cities Data System –Building Permits

<sup>ix</sup> U.S. Census Bureau, Census 2000, DP-4

<sup>x</sup> U.S. Census Bureau, Census 2000, DP-3

<sup>xi</sup> U.S. Census Bureau, Census 2000, DP-3, Pennsylvania Department of Labor, Center for Workforce Information Analysis

<sup>xii</sup> U.S. Census Bureau, Census 2000, DP-2

<sup>xiii</sup> Pennsylvania Department of Education, Division of Data Services

<sup>xiv</sup> U.S. Census Bureau, Small Area Health Insurance Estimates; Pennsylvania Department of Public Welfare

<sup>xv</sup> U.S. Census Bureau, Population Division; Pennsylvania Department of Health, Vital Statistics

<sup>xvi</sup> U.S. Census Bureau, Census 2000, Summary File 3, Worker Flow Files